

Discreet textile sun protection for maximum flexibility

# heroal sun protection systems

**heroal**



# Glare-free shading: heroal sun protection systems

First-class materials, technical perfection down to the last detail, and a wide range of design options distinguish heroal's efficient systems technology. These are benefits that impress. For decades, heroal has been a reliable partner for architects, builders, and fabricators with innovative aluminum and aluminum composite solutions for the building shell.

Architects appreciate the diversity of design possibilities, builders can bring their specific requests to life with a reliable system, and our partners benefit from the economical and efficient heroal system solutions.

Just like all heroal systems, the high-quality heroal VS Z and heroal VS C screen systems combine durability and functionality with first-class design. The large number of textiles and system colors, as well as increased size compatibility, ensure maximum diversity.



heroal VS Z Page 04

heroal VS C Page 05

Installation Page 06

Panel Boxes Page 08

Guide Rails Page 09

End Slats Page 10

Textile/  
Color Selection Page 11

# heroal VS Z

Zip screen system for high wind stability



The versatile heroal VS Z is an innovative and energy-efficient zip screen system. The system is designed for residential and medium to large-scale commercial structures, such as schools and office buildings. heroal VS Z consists of a translucent to opaque mesh installed over windows, doors, or patio spaces. It helps keeps temperatures pleasant indoors on hot days while ensuring optimum glare, privacy, and protection from insects. In addition to the system’s energy efficiency benefits, it also filters up to 100% of UV rays, which helps protect furnishings from fading. heroal VS Z meets the growing demand for sun protection. The system can be used to shade large areas, regardless of wind conditions. The heroal VS Z curtain only needs to be retracted at wind velocities exceeding 90 mph. Thanks to the low coil diameters of the fabric, heroal VS Z allows for a compact box design.

\* depending on the selected textile

## Versions and design

- » wider curtain walls can easily be shaded with connected systems of joined individual units
- » compatible with obstacle detection, which stops the curtain if it encounters an obstruction
- » curtain control via wall switch, remote, or crank handle
- » heroal VS Z can be integrated into smart building/home technology
- » wide range of installation options on the wall/window, contra or concealed in the lintel
- » fully flush-mounted guide rails possible
- » narrow guide rail with a view width of 0.98 inches and no visible screw connection available for all installations, except for contra installation
- » combinations of connected units with different element heights with a continuous box panel possible in door/window combination
- » more than 250 different colors and textiles available, from translucent to opaque
- » high-quality color design with heroal hwr powder coating, heroal SD surface designs and Les Couleurs® Le Corbusier for aluminum components

## System dimensions and features

- » the curtain is guided through fixed guide rails via a zipper attached to the fabric with a weighted end slat
- » shading areas with an element width of up to 20 feet and an area of 200 ft² in extremely small 4.9-inch panel boxes are possible and can be used in all box designs
- » high weather resistance and low maintenance
- » wind-resistant up to 90 mph
- » reduction of solar radiation by up to 100%\*
- » reduction of UV radiation by up to 100%\*

# heroal VS C

Functional cable guide and elegant design



The heroal VS C sun protection system comes with a slimline stainless steel cable guide, making it ideal for windows and curtain walls with narrow view profile widths. The slender appearance of the system perfectly matches heroal’s refined design language – the high-quality stainless steel cables impress with their minimalistic aesthetic. heroal VS C offers numerous design options thanks to the extensive color and fabric selection. Architects, builders, and heroal partners can choose from the same selection of textiles and colors available for the heroal VS Z. heroal VS C’s ability to reflect sunlight allows solar radiation to be reduced by up to 75%\*. These versatile features make the sun protection system with cable guide ideal wherever high wind velocities are not expected.

\* depending on the selected textile

## Versions and design

- » compatible with obstacle detection, which stops the curtain if it encounters an obstruction
- » curtain control via wall switch or remote
- » versatile options for installation on a wall/window or contra
- » heroal VS C can be integrated into smart building/home technology
- » more than 250 different colors and textiles available
- » high-quality color design with heroal hwr powder coating, heroal SD surface designs, and Les Couleurs® Le Corbusier for aluminum components

## System dimensions and features

- » curtain guided on stainless steel cables
- » Capable of shading areas with an element width of up to 16.4 feet and an area of 161 ft² in compact 4.9-inch box panels. Applicable to all box designs
- » extremely low-maintenance
- » for regions with low wind load requirements
- » Textile reduces solar radiation by up to 75%\*
- » Textile reduces UV radiation by up to 98%\*



# Installation options

Easy installation for every situation

heroal sun protection systems set themselves apart with their easy application and versatile installation options. They can be installed on the wall or window, in the reveal or lintel, or surface-mounted on the curtain wall. When installed in the reveal, the panel box faces inwards due to the contra installation. Maintenance and repairs are easy to perform when required thanks to the simple system design. A dismantling ring and an optimized roller capsule facilitate the dismantling of the textile. Installation with crossbars is also possible in order to vary the distances to

the window or the structure. The small winding diameter of the textile means that it can easily be installed in small panel boxes. The high-quality color design for the aluminum components with heroal hwr powder coating, heroal SD surface designs, and Les Couleurs® Le Corbusier® colors is available for all versions.



On the wall/on the window

### Surface-mounted installation

- » installation on the wall or window
- » guide rails heroal GR 25 with 25 mm or heroal GR 37 with 37 mm view width
- » option of spacing with doubled guide rails or crossbeams for greater distance from the structure
- » no visible screw connections thanks to clip-on cover strip
- » inspection from the front



In the reveal (contra)

### Contra installation

- » for deep reveals
- » guide rail heroal GR 37 with 37 mm view width
- » for greater distance to the window or obstacles on the window-sill
- » no visible screw connections thanks to clip-on cover strip
- » full-surface view of the panel boxes thanks to the use of panels without an additional groove for ceiling and wall brackets





## Panel box systems

Panel boxes for every design

heroal offers two different types of panel boxes for the sun protection systems. The heroal FME (front-mounted extruded) panel box system is an extruded front-mounted box that is positioned on the masonry or in the reveal. The front-mounted box system is available in different box designs with 20°, 45°, and 90° chamfer as well as a half-round variant. The extruded heroal FMB (flush-mounted box) panel box system is a flush-mounted box. It is installed directly in the lintel, where it is concealed. Different plaster-base profiles are available for selection for different applications.

**System features**

- » extremely solid box end system comprised of a steel motor mount and aluminum decorative cap for all box designs and sizes
- » simplified processing of the profiles thanks to the integrated screw channels enable greater widths and additional stability in the panel box
- » the panel box system demountable from below contains a roller capsule with offset locking catch
- » high-quality color design with heroal hwr powder coating, heroal SD surface designs, and Les Couleurs® Le Corbusier® for aluminum components



heroal FME 20° front-mounted box



heroal FME 90° front-mounted box



heroal FME 45° front-mounted box



heroal FME HC N front-mounted box

## Guide rails

Guide rails tailor-made for every installation situation

heroal offers a wide range of guide rails for the sun protection systems that can be used to create perfect solutions for every installation situation. The exceptionally robust extruded rails made from high-quality aluminum are fitted with composite inserts and keep the textile stable as well as ensuring quiet operation. The guide rails for the heroal VS Z are available as a double guide in view widths of 25 mm, 37.5 mm, and 60 mm, where the narrow 25 mm view widths create a harmonious design in combination with the heroal C 50 curtain wall system. For easy installation of the heroal VS Z OR vertical blind for patio roofs, the guide rails can be detached from the motor mount and the roller capsule mount.

**System features**

- » heroal GR 37 FMB type II with interior cover cap structure enabling it to be completely plastered in
- » heroal GR 37 2-piece for concealed screw connection for all types of installation, including contra installation
- » double guide rail, 60 mm wide for heroal GR 37
- » easy to clip the 2-piece guide rail on the wall installation profile
- » double profiles available for all guide rails
- » high-quality color design with heroal hwr powder coating, heroal SD surface designs, and Les Couleurs® Le Corbusier® for aluminum components



heroal GR 37 FMB type II guide rail



heroal GR 37 2-piece guide rail



heroal GR 37 contra installation guide rail

# End slats

## End slats for ideal textile tension

heroal offers three different end slats for the sun protection systems. The extruded aluminum end slats with different geometries ensure that the textile is under continuous tension. Depending on the height and width of the element, end slat type I, type II or type III can be selected to achieve an optimum textile tension. End slat type III is ideal for extremely narrow and wide elements as it ensures even better textile tension and less wrinkling with

the use of one or two weights as well as a rectangular hollow section. End slats type II and III also have the same view heights, making combined installation possible.



End slat type I



End slat type III



End slat type II

# Textile and color selection

## Maximum design freedom

For a pleasant room climate and different needs and requirements, heroal offers a high-quality and diverse selection of textiles: over 250 fabrics are available for selection, with varying colors and light transmittance – from semi-transparent to opaque.

The **“Sergé & Satiné”** fabric consists of woven and coated glass fibers. The glass fiber core and PVC coating make the fabrics particularly supple, creating a cozy atmosphere while ensuring a clear view to the outside.

The **“Soltis”** fabric for exceptional shape retention. The textile is pulled in both directions under high tension and fixed in place with liquid PVC. The high textile tension makes the fabric ideal for shading large areas and for complete room darkening.

The **“Flexilight 6002 Opaque”** fabric is highly resistant to UV rays and boasts a dirt-repellent texture. This guarantees an attractive look even after many years of use. The PVC fabric is phthalate-free, very easy to process and extremely flexible.

The **“Elements”** fabric is woven from spun-dyed acrylic fibers and provides optimized performance features in terms of color stability, resistance level and sun protection. The exclusive “Cleanguard” coating makes these textiles exceptionally water- and dirt-repellent.

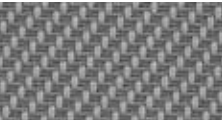
The **“Sergé BO Lunar and Solar”** blackout fabrics have a darkening effect. Both also repel humidity thanks to a full-surface PVC foil. The BO Lunar textiles provide complete darkness while the BO Solar textiles have a translucence with an opening factor of 3%. heroal IS insect screen system fabrics can also be used. In addition, a PVC viewing window can be integrated on request (**Crystal**). For a completely individual design, customized printing is also available (on request).

The **“Twilight Pearl”** fabric is a 100% PVC-free solution with a textile character and a harmonious transparency. It is extremely weather-resistant, odor-neutral and flame retardant.

All shades in the RAL color range, the natural shades of the Les Couleurs® Le Corbusier and heroal SD surface designs with wood, concrete or rust looks are available for the aluminum components of the textile screens.

### Trend textiles

For the sun protection systems heroal offers 15 selected trend textiles with short delivery times:



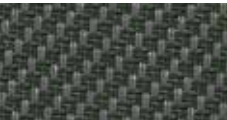
2305 Nacre-gray



2333 Anthracite gray



2334 Jet black



2357 Palm tree



3957 White-pearl



3958 Grey-white



3959 Grey-white-pearl



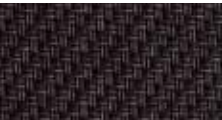
3960 Pearl



3963 Grey



3964 Grey-anthracite



3972 Anthracite



2328 Pearl



2329 Grey



2331 Anthracite



2337 Grey-anthracite

You can view the full selection of textiles in textile fans. The textile colors shown here may differ from the original for printing-related reasons.

# heroal



## simply better *spaces for life*

As a manufacturer of aluminum system solutions for roller shutters, sun protection, roller doors, windows, doors, sliding doors, curtain walls, and patio roofs, heroal is an international market leader, supporting high-quality residential and commercial construction projects worldwide. heroal products are developed and manufactured in Germany and set themselves apart with their premium quality and exceptional performance features. As a result, the innovative system solutions contribute to greater sustainability, security, comfort, and architectural freedom for both current and future building projects and impress with simple and efficient planning and fabrication by heroal specialist partners.

Roller Shutters | Security Shutter Systems | Sun Protection

### **heroal USA Inc**

150 North Michigan Avenue | 35th Floor | Chicago, Illinois 60601, USA | Phone +1 312 644-0738 | [www.heroal.us](http://www.heroal.us)