

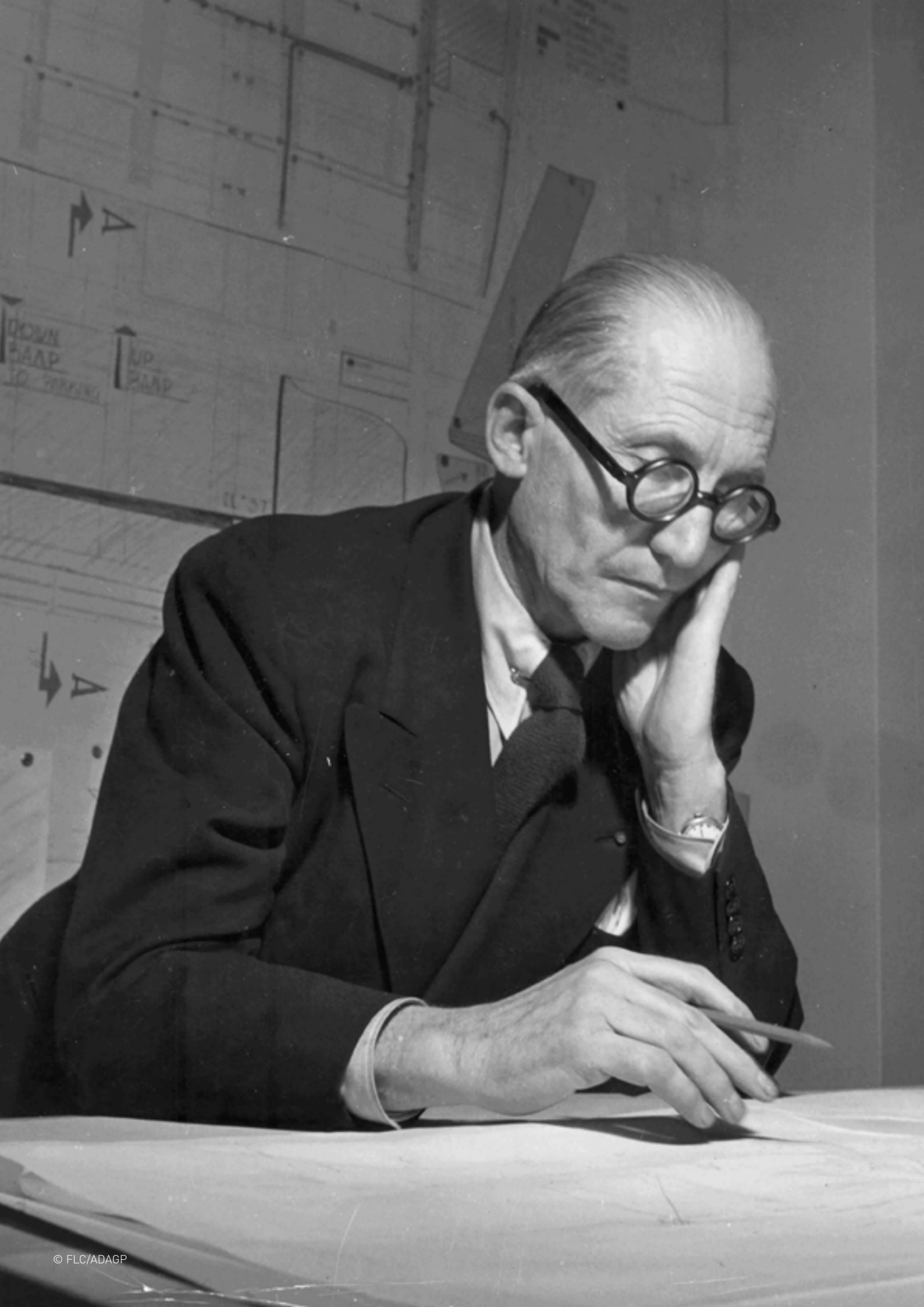


Les Couleurs®
Le Couleurs

SIMPLY BETTER. DESIGNED.

ROOM FOR COLOUR.

heroal
SIMPLY BETTER. DESIGNED.



In architecture, colour is an equally powerful tool as is the ground plan and layout.

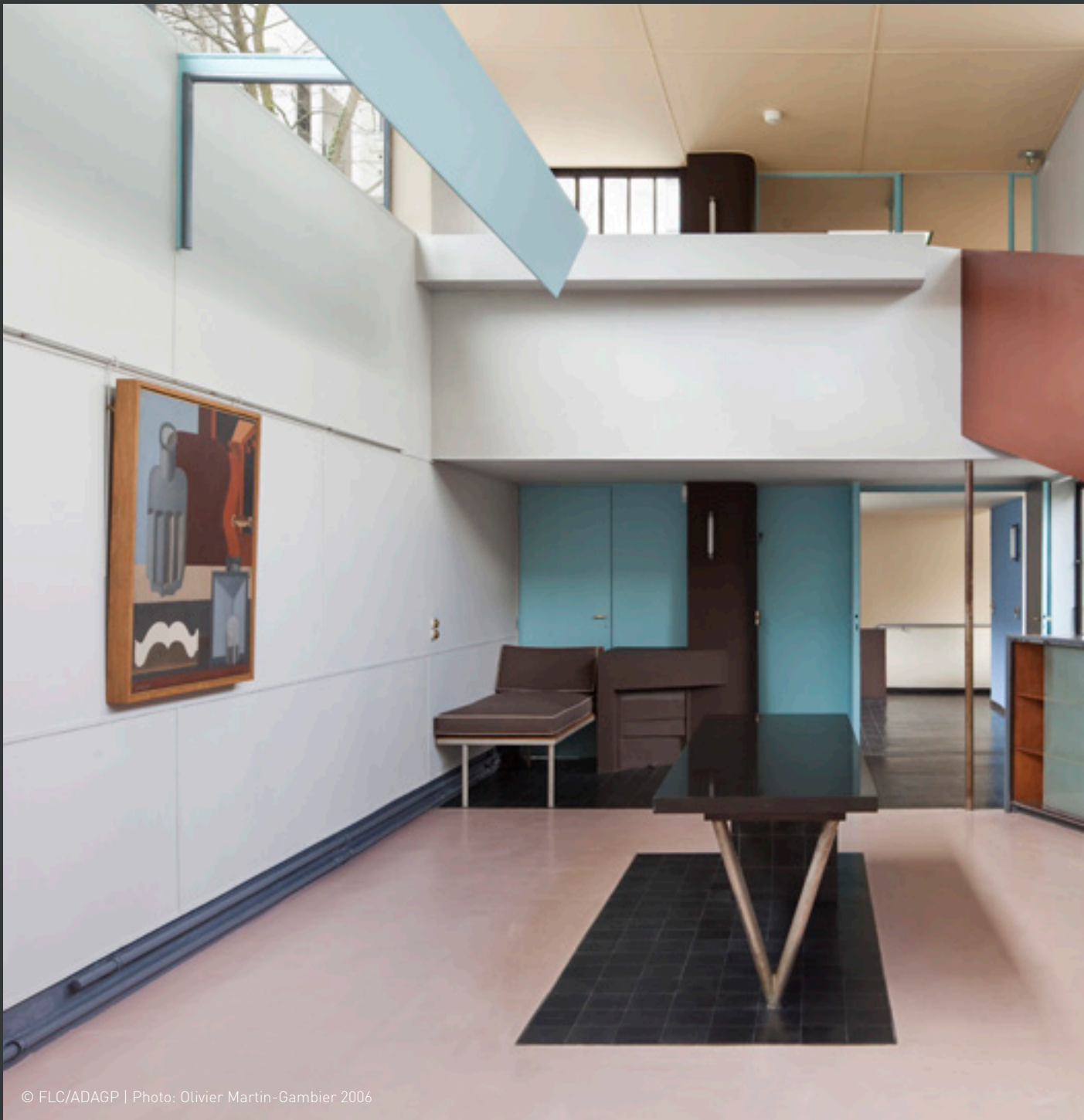
Le Corbusier

04	Colour Makes Architecture
06	Colour Needs Harmony
11	Colour Designs Space
13	Colour Structures Curtain Walls
15	Colour Provides Options

Colour Makes Architecture

Les Couleurs® Le Corbusier

Besides architecture, Le Corbusier devoted himself to painting – with colour being one of his essential topics in both disciplines. The universal genius Le Corbusier has not only markedly forged our ideas of modern architecture, he has also developed a colour system that brings together architecture with colour.



© FLC/ADAGP | Photo: Olivier Martin-Gambier 2006

At that time, building owner Raoul La Roche talked of a „symphony of prisms“: the colour concept of the „Villa La Roche“ consists of seventeen shades. Dark brown surfaces move certain areas into the background. The red ramp, however, proudly takes a step forward because of its prominent colour.



© FLC/ADAGP



© FLC/ADAGP

Architecture Becomes a Total Work of Art

Colour to Le Corbusier was equally important as floor plans or layouts; but the façades of his buildings, representing the building to the outside, played a major role as well. He considered architecture as a total work of art, not just as a spatial discipline. Pursuing this idea, he experimented extensively with colours and their architectural impact. The harmonious colour collections developed by him were to create an interaction between room and colour. He put this concept into practice by designing the Villa La Roche in Paris in 1926: „The colour [...] may lead the eye through the complicated rooms of the free ground plan [...]“¹. Here, he uses colour as a means to create a sculpture to live in.

¹ Le Corbusier, Almanach d'architecture moderne, Paris, 1926

Colour Needs Harmony

Le Corbusier's Architectural Polychromy

Architectural colour design only becomes convincing and harmonious when it follows a plan. With his Architectural Polychromy, Le Corbusier created a harmonious, but at the same time clearly arranged system that still constitutes the ideal tool for architectural colour design.



Architectural Polychromy in Stuttgart: Designed and built by Le Corbusier and his cousin Pierre Jeanneret, the detached house located in the Weissenhof Estate in Stuttgart impresses by its colour design inside.

Colour Harmony

Based on familiar colours to be found in nature, Le Corbusier created his eternally valid chromatics, the Architectural Polychromy. Any colour can be combined with another - the effect is always harmonious.

Colour Diversity

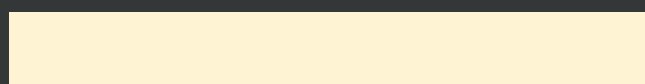
Le Corbusier created a total of 63 colours in two collections - in 1931 and 1959. Each collection is arranged in sequences, consisting of solid colours and their brighter nuances, masterfully graduated.

Colour Effect

Each of Le Corbusier's shades represents specific spatial and human effects. „32031 céruleen vif“, for example, the luminous cerulean, warm, sensual and Mediterranean - the colour captures the observer. In his intense examination of colours, Le Corbusier realised which colours modify a room in which way, how objects can be classified and in which way colours have a psychological effect on us.

Colour Scheme

Le Corbusier colour collection of 1931 in hwr quality



32001 blanc heroal colour code 602



32042 vert anglais pâle heroal colour code 787



32010 gris foncé 31 heroal colour code 765



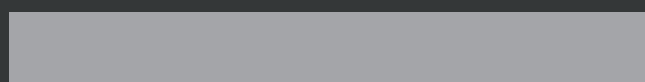
32052 vert clair heroal colour code 788



32011 gris 31 heroal colour code 766



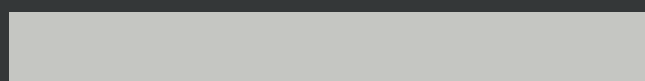
32053 vert jaune clair heroal colour code 789



32012 gris moyen heroal colour code 767



32060 ocre heroal colour code 791



32013 gris clair 31 heroal colour code 768



32082 orange pâle heroal colour code 797



32023 outremer pâle heroal colour code 776



32091 rose pâle heroal colour code 635



32024 outremer gris heroal colour code 777



32102 rose clair heroal colour code 773



32031 céruléen vif heroal colour code 778



32110 l'ocre rouge heroal colour code 801



32032 céruléen moyen heroal colour code 780



32111 l'ocre rouge moyen heroal colour code 802



32033 céruléen clair heroal colour code 781



32112 l'ocre rouge clair heroal colour code 803



32034 céruléen pâle heroal colour code 782



32120 terre sienne brûlée 31 heroal colour code 811



32041 vert anglais clair heroal colour code 786



32121 terre sienne brique heroal colour code 813

Colour Scheme

Le Corbusier colour collection of 1931 in hwr quality



32122 terre sienne claire 31 heroal colour code 814



32131 ombre brûlée claire heroal colour code 818



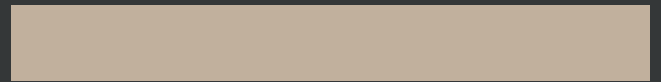
32123 terre sienne pâle heroal colour code 815



32141 ombre naturelle moyenne heroal colour code 819



32130 terre d'ombre brûlée 31 heroal colour code 817



32142 ombre naturelle claire heroal colour code 820

Colour Scheme

Le Corbusier colour collection of 1959 in hwr quality



4320B blanc ivoire heroal colour code 603



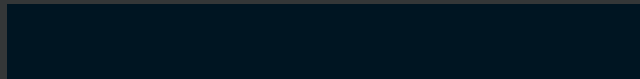
4320L ocre jaune clair heroal colour code 799



4320D terre sienne brûlée 59 heroal colour code 816



4320M le rubis heroal colour code 631



4320E noir d'ivoire heroal colour code 769



4320N bleu céruléen 59 heroal colour code 783



4320F vert olive vif heroal colour code 790



4320P terre sienne claire 59 heroal colour code 800



4320H gris 59 heroal colour code 772



4320U gris foncé 59 heroal colour code 775



4320J terre d'ombre brûlée 59 heroal colour code 823

Colour Scheme

Le Corbusier colour collections of 1931 and 1959 - interior design colours



32020 bleu outremer 31

heroal colour code 525



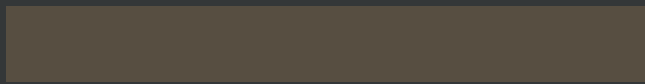
32101 rouge rubia

heroal colour code 596



32021 outremer moyen

heroal colour code 530



32140 ombre naturelle 31

heroal colour code 600



32022 outremer clair

heroal colour code 535



4320A rouge vermillon 59

heroal colour code 622



32030 bleu céruléen 31

heroal colour code 540



4320C rose vif

heroal colour code 662



32040 vert anglais

heroal colour code 548



4320G vert 59

heroal colour code 624



32050 vert foncé

heroal colour code 552



4320K bleu outremer 59

heroal colour code 646



32051 vert 31

heroal colour code 555



4320O gris clair 59

heroal colour code 649



32080 orange

heroal colour code 570



4320R ombre naturelle 59

heroal colour code 650



32081 orange clair

heroal colour code 585



4320S orange vif

heroal colour code 663



32090 rouge vermillon 31

heroal colour code 588



4320T bleu outremer foncé

heroal colour code 651



32100 rouge carmin

heroal colour code 591



4320W le jaune vif

heroal colour code 655

Due to the printing process, colours may deviate slightly from the original Le Corbusier colours.
For original shades, please refer to the heroal Les Couleurs® Le Corbusier colour fan.



Colour Designs Space

Creating Inside Space with an Individual Concept

In interior rooms, colour may serve as a guidepost, as a corporate trademark or as a tool for creativity and individuality in residential buildings. One thing is for sure: colour is always emotional and therefore quintessentially unique.

A building envelope also has an interior: heroyal windows, doors, curtain walls as well as sliding and lifting-sliding door systems are the elements that create the spatial design of the inside. Arranged in alignment, they define the openings towards the outside. Contours rich in contrast may be in the foreground. Alternatively, an unobtrusive design that does not dominate the room may be required. Both ideas become possible with Les Couleurs® Le Corbusier: the

interior design of heroyal systems is available in the 63 shades of the Architectural Polychromy. Entirely individual concepts become feasible: The interior colour design can affect emotions, can be used as a corporate element in corporate architecture or serve as a means for orientation. This creates an impressive master plan, turning the high-quality surface of heroyal aluminium systems into a deliberately designed element.



Above: A consistent interior design is achieved when wall and lifting-sliding door harmonize in terms of colour. Shade: 4320G vert 59 (heroyal 624)

Left: Lifting-sliding systems in shades of anthracite upgrade modern architecture. Shade: 4320H gris 59 (heroyal 772)

15



**GERMAN
DESIGN
AWARD
WINNER
2020**

Colour Structures Curtain Walls

Defining the Building Envelope by its Openings

The „eyes“ towards the outside: The colour design of windows, doors, curtain walls as well as sliding and lifting-sliding systems deserves a well-considered concept. The extensive colour palette of Les Couleurs® Le Corbusier provides a tool to define this concept in perfect tune with the surrounding building envelope.

In the design of the building envelope, harmony does not mean uniformity - harmonious contrasts may just as well be the guideline. heroal windows, doors, curtain walls as well as sliding and lifting-sliding systems may be designed in all 63 shades of the Couleurs® Le Corbusier palette. The result is always harmonious - because Le Corbusier's shades can be combined in any way - they always create a perfect match. The high quality of a surface is as important as its shade: The combination of

aluminium systems and Le Corbusier colours represents a particularly high quality. heroal's professionalism in coating creates long-lasting, colour-intensive and resistant surfaces.

As a manufacturer of high-quality aluminium system solutions for the building shell, heroal has been awarded the German Design Award 2020. The heroal Les Couleurs® Le Corbusier entrance door received the award in the category "Excellent Product Design".



Above and left: Door systems in perfect tune using Les Couleurs® Le Corbusier - inside as well as outside
Shade of door: 32130 terre d'ombre brûlée 31 (heroal 817), shade of handle: 32141 ombre naturelle moyenne (heroal 819)



Colour Creates Options

Discovering the Potential of Colourful Design

Les Couleurs® Le Corbusier colours create new options regarding individuality and consequential colour design of heroyal windows, doors, curtain walls as well as sliding and lifting-sliding systems. This makes the holistic transfer of architectural concepts possible.



Above: Classy and harmonious - the shade of furnishings and equipment was tuned to the window system. Shade of window: 32130 terre d'ombre brûlée 31 (heroyal 817), shade of carpet: 32141 ombre naturelle moyenne (heroyal 819), shade of desk: 32130 terre d'ombre brûlée 31 (heroyal 817)

Left: Special interior designs extend to the colourful design of the window systems. Shade: 4320G vert 59 (heroyal 624)



Above: Polychrome design made possible: door and door frame can be designed in different or identical shades. Shade of door panel and frame: 32112 l'ocre rouge clair (heroyal 803)



Above: The inside and outside of the door can be designed in different colours. Shade of door: gris foncé (heroyal 765), shade of handle: rouge carmin (heroyal 591)

The heroal Object Service

Supported through all phases:

Architects, designers and project developers are well-advised by the heroal object service:

- Assistance with system choice
- Creation of service specifications
- Planning of design rules
- Development of special solutions
- Seminars and training
- Provision of list of bidders
- BIM Object

Explore our
architects' area on
www.heroal.de

Contact:

Tel. + 49 5246 507-5156

objekt@heroal.de

heroal develops and produces high-quality, innovative aluminium system solutions for **Roller shutters, Sun protection, Roller doors, Windows, Doors and Curtain walls**. heroal systems set standards in terms of innovation and „Made in Germany“ quality - and have received several awards.

www.heroal.com

